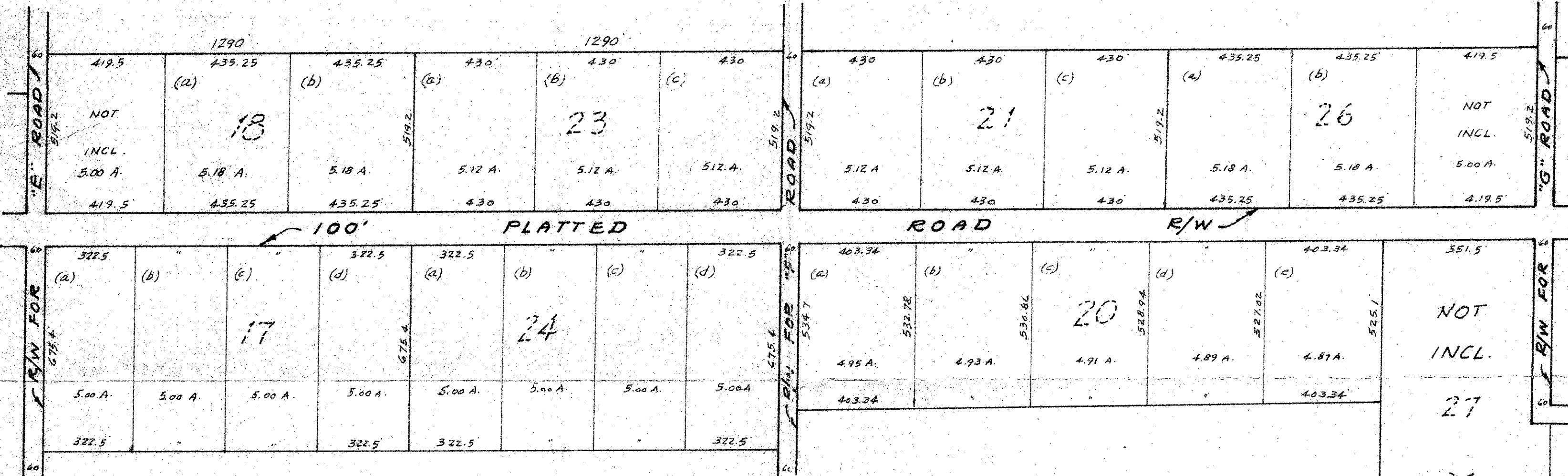


BLOCK "E"

BLOCK "F"



~ PROPOSED SUBDIVISION ~
 TRACTS 17, 18, 23 & 24, BLOCK "E"
 & TRACTS 20, 21 & 26, BLOCK "F"

LOXAHATCHEE GROVES

LOXAHATCHEE, FLA.

FOR
 LOXAHATCHEE INVESTMENT CORP.
 NO. 12

DATE: OCT. 1967
 SCALE: Approx. 300'/inch

ur0394.igr
 LOXAHATCHEE GROVES TR 17,18,23 & 24
 BK E TR 20,21 & 26 BK F

PREPARED BY
 JOHN P. DAVIS & ASSOCIATES, INC.